

GambleAware[®]

December 2017 Update

Welcome to GambleAware's latest quarterly e-newsletter.

In October, I wrote an [open letter](#) concerning the current level of the industry's funding of GambleAware. I explained that trustees, mindful of what is in the best interests of those who GambleAware is committed to help, are seeking the introduction of a statutory levy. In the meantime, the charity is asking all companies to 'self-certify' what proportion of Gross Gambling Yield (GGY) their donations to GambleAware represents, and will publish details of donations from 1st April 2018.

In December, GambleAware hosted its fifth annual harm-minimisation conference focused on how young people are gambling and gaming in a rapidly evolving technical and social environment. Attended by over 300 people across the two days, this is an increasingly popular, international event, attracting a broad audience of academics, researchers, treatment providers, policy makers and industry figures. Among the highlights was the launch of the Professional Players' Federation [gambling education initiative](#) in partnership with GambleAware.

GambleAware has published its [Annual Review](#) setting out what the charity achieved in the 12 months ending 31st March 2017. Our level of expenditure has doubled since 2013 to more than £8 million, and is expected to exceed £10 million in the current year.

Guided by the [National Responsible Gambling Strategy](#), trustees will review and update the charity's current two-year [Commissioning Plan](#) in the first quarter of 2018 with a continuing focus on research, education and treatment, particularly in relation to young people and vulnerable communities.

Marc W. Etches, Chief Executive

For further information, please visit about.gambleaware.org or [send us an email](#).

GambleAware's Harm Minimisation Conference

GambleAware held its 5th annual Harm-Minimisation Conference on Wednesday 6th December and Thursday 7th December at The King's Fund, London.

The overall theme for this year's conference was focused on how young people are gambling and gaming in a rapidly evolving technical and social environment, and asked what implications does this have for minimising gambling-related harm in the future. GambleAware conferences have been instrumental in shaping the direction of research and policy development, as well as informing industry practice in relation to promoting player protection and responsible gambling behaviour.



The conference programme can be found [here](#)

Read the opening remarks by Kate Lampard
CBE



The National Casino Forum announces funding guarantee



The UK's land-based casino operators have agreed for the first time to guarantee that 0.1% of their annual Gross Gaming Yield (GGY) will go directly to GambleAware.

"It is imperative that all businesses deriving a profit from commercial gambling in Britain support GambleAware in the delivery of the National Responsible Gambling Strategy. This initiative by NCF's members will ensure transparency in relation to the casino sector's funding of research, education and treatment, and sets an important benchmark for others." Marc Etches, GambleAware Chief Executive

The National Casino Forum announcement
can be found [here](#)

It is not too late to support GambleAware in 2017

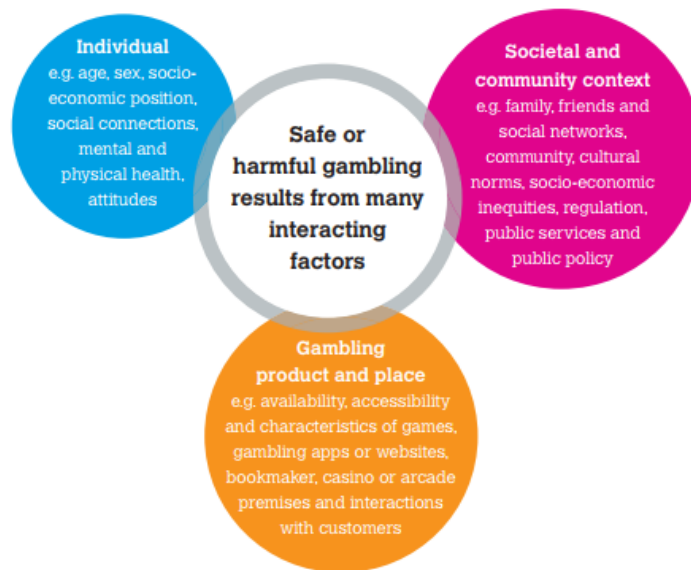
[Donate to GambleAware today](#)

[Read how your support makes a difference](#)

[Join our Trek to Machu Picchu in 2018](#)

GambleAware research

GambleAware is committed to delivering an independently commissioned research programme that shifts the focus beyond the individual to include the gambling environment and products in line with a public health approach.



GambleAware's research activity is guided by the recently published [RGSB Research Programme](#) and its independence is ensured by the [Research Governance and Commissioning Procedure](#) agreed with the Gambling Commission and its independent advisers, the Responsible Gambling Strategy Board.

All commissioned research is published via the [GambleAware InfoHub](#).

[Browse GambleAware research here](#)

Brief intervention guide

GambleAware has published a Brief Intervention Guide aimed at professionals who are non-specialists in the treatment of problem gambling, but who work with potentially vulnerable groups.

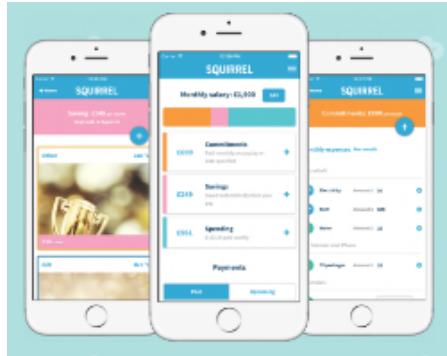
This Guide offers practical tips on identifying a problem, how to talk to someone about their gambling, offering immediate brief support and when to signpost to specialist services.

[Access the guide here](#)

Squirrel money management app

GambleAware has collaborated with Squirrel, a money management app aimed at helping those who struggle to manage their money. Squirrel is a Barclays-held account that splits your salary up into your bills, savings and weekly allowance. It is free for the first 3 months and then there is a monthly fee.

Squirrel is offering a 10% discount to those who sign up via BeGambleAware.org.



Find out more about Squirrel here

BeGambleAware.org

BeGambleAware.org logos can be downloaded in a range of technical formats [here](#).

Please do use the new logo wherever possible, in line with the latest edition of the Industry Code for Socially Responsible Advertising, which can be read [here](#).

A version of the BeGambleAware.org logo with the Helpline number included is also available for download. It is recommend that this is used on materials specifically designed to signpost those identified as at-risk towards help e.g. leaflets in venues; website pages describing “Where to get help”.

BeGambleAware.org[®]
Helpline: **0808 8020 133**

Visit [BeGambleAware.org](https://www.begambleaware.org)

Check who can use the [BeGambleAware.org](https://www.begambleaware.org)
logo here

Also...

- GambleAware responds to Government Gambling Review. Read more [here](#).

- Research into online problem gambling says withdrawals should be faster and easier. Read the [announcement](#), [report](#) and [research highlights](#).
- GambleAware responds to the BBC's Price of Football Survey. Read the announcement [here](#).
- GambleAware responds to sponsorship of English Football League by an online gambling company. Read the announcement [here](#).
- GambleAware becomes Charity Partner of the SBC Awards 2017. Read more [here](#).
- When it comes to children and gambling, it's better to be safe than sorry, says GambleAware, as the charity calls on the government to rectify the omission of gambling from new "Internet Safety Strategy". Read the press release [here](#).
- Gambling-related harm is conspicuous by its absence from the government's draft Internet Safety Strategy. Read our response to the DCMS consultation [here](#).

[More news here](#)

Text AWARE to 70660 to donate £10 to GambleAware

Texts cost £10 plus your standard network rate. GambleAware will receive 100% of your donation. You must obtain permission from the bill payer before sending a text message. If you have any queries about text-to-donate, please call 020 7287 1994 or email: info@gambleaware.org.

Responsible Gambling Trust, operating as GambleAware, is a registered charity (Charity No 1093910)

GambleAware
7 Henrietta St, London WC2E 8PS
<http://about.gambleaware.org> - info@gambleaware.org
Charity No 1093910 - Registered in England No 4384279

[Unsubscribe](#)